

University of Maryland, Baltimore County

Office of Sponsored Programs 4th Quarter Report, FY 2011

	FY 2010	FY 2011	Difference
Grand Total:	94,174,862	83,440,377	-10,734,485
<i>College of Engineering and Information Technology</i>	10,413,735	5,712,708	-4,701,027
<i>College of Arts, Humanities and Social Sciences</i>	9,467,605	19,149,263	9,681,658
<i>School of Social Work</i>	189,156	153,086	-36,070
<i>College of Natural and Mathematical Science</i>	21,939,669	17,264,462	-4,675,207
<i>Centers and Insititutes</i>	42,174,983	35,859,247	-6,315,736
<i>Central Activities</i>	9,989,714	5,301,611	-4,688,103
Notable Departmental Increases			
<i>MIPAR</i>	5,338,412	15,714,207	10,375,795
<i>Mathemtics and Statistics</i>	559,686	1,346,212	786,526
<i>Hilltop Institute</i>	7,849,000	9,510,768	1,661,768
<i>CUERE</i>	2,808,496	6,044,244	3,235,748
<i>Center for Aging Studies (included in MIPAR Awards)</i>	1,603,933	3,854,509	2,250,576
<i>JCET</i>	4,849,157	6,427,968	1,578,811
			0
			0
Notable Departmental Decreases			
<i>CBEE</i>	2,140,081	510,119	-1,629,962
<i>CSEE</i>	5,795,418	4,004,858	-1,790,560
<i>Physics</i>	3,394,910	1,086,638	-2,308,272
<i>CSST</i>	4,975,946	2,709,584	-2,266,362
<i>GEST</i>	19,089,097	9,099,098	-9,989,999
<i>CASPR</i>	3,777,966	1,254,191	-2,523,775
			0
			0

CASPR	Center for Advanced Studies in Photonics Research
CBEE	Chemical, Biochemical & Environmental Engineering
CHPDM	Center for Health Program Development and Management
CUERE	Center for Urban Environmental Research and Education
CWIT	Center for Women and Information Technology
DPET	Division of Professional Education and Training
GEST	Goddard Earth Science and Technology Center
JCET	Joint Center for Earth Systems Technology
GPHI	Goddard Planetary Heliophysics Institute
MIPAR	Maryland Institute for Policy Analysis and Research

YTD, 4th Quarter, FY2011

UNIVERSITY OF MARYLAND BALTIMORE COUNTY

Office of Sponsored Programs: 4th Quarter YTD, FY2011

	FY2010						FY2011						
	Primary			Collaborative			Primary			Collaborative			
	App	Awd	Award	App	Awd	Award	App	Awd	Amount	App	Awd	Amount	
College of Eng & Info Tech													
Civil Engineering	3	4	217,029				2						
<i>CUERE</i>				6	7	750,298				5	7	815,040	
Chem,Biochem & Enviro Eng-CBEE	9	5	1,011,140	2	2	1,128,941	10	4	510,119				
<i>Biology</i>				2									
<i>Education</i>				2	1,128,941								
Mechanical Engineering	21	12	1,361,077	1									
<i>CUERE</i>										1	1	491,668	
<i>Graduate School</i>				3	121,500				2	81,000			
<i>Visual Arts</i>											1		
<i>Physics</i>				1									
<i>STEM Education</i>				1	299,708								
<i>Jnt Ctr Earth Sys Technology</i>				1									
<i>Computer Sci Elec Engineering</i>											1		
Computer Sci Elec Engineering	43	42	5,795,418	2									
<i>CASPR</i>				7	1,015,984				4	759,251			
<i>Mathematics and Statistics</i>				2									
<i>Geography</i>											1		
<i>CUERE</i>											1		
<i>Vice Provost Activites</i>				1	1	147,600				1	2	328,920	
<i>Computer Sci Elec Engineering</i>				2	29,709								
<i>Information Systems</i>											1		
Information Systems	24	7	900,130				22	3	130,491	2			
<i>Graduate School</i>				3	121,500				2	81,000			
<i>CWIT</i>				1	40,351				1				
<i>CUERE</i>											2		
<i>Computer Sci Elec Engineering</i>											1		
College of Eng & Info Tech Sub-Total:	100	70	9,284,794	5	2	1,128,941	124	59	5,712,708	5			

UNIVERSITY OF MARYLAND BALTIMORE COUNTY

Office of Sponsored Programs: 4th Quarter YTD, FY2011

	FY2010						FY2011					
	Primary			Collaborative			Primary			Collaborative		
	App	Awd	Award	App	Awd	Award	App	Awd	Amount	App	Awd	Amount
Arts, Humanities, Soc Sci												
Africana Studies							1					
American Studies	1						2					
Ancient Studies							1					
<i>MIPAR</i>				2								
Dance	1						1	1	2,850			
Political Science							1		1,500			
<i>MIPAR</i>				1	2	81,370						
<i>Shriver Center</i>										1		
Psychology	23	22	2,089,637				26	23	2,018,295			
Dept of Emerg Health Servs							2					
MIPAR	27	30	3,241,261	21	9	2,097,151	38	47	11,576,188	16	16	4,138,019
<i>Ancient Studies</i>				2								
<i>Political Science</i>				1	2	81,370						
<i>The Hilltop Institute</i>				4	4	275,177				2	4	249,152
<i>Public Policy</i>				5	1	17,000				4	1	71,687
<i>Economics Dept</i>				1	1	200,000				1	1	15,761
<i>Sociology Dept</i>				11	3	1,603,933				10	12	3,854,509
Center for Art & Visual Cultur	5	3	429,388				5	2	32,085			
Imaging Research Center	2	2	102,100	2			2	2	17,068			
Modern Languages & Linguistics	2	1	75,190				3	1	56,873			
Geography	1			4			13	1	15,000	8	2	30,484
<i>Goddard Earth Scis & Tech Cntr</i>				1						1	1	29,004
<i>CUERE</i>				9	5	764,057				9	10	2,760,921
Education	13	4	714,018				7	5	653,312			
<i>Chemistry and BioChemistry</i>				1	1	159,972						
<i>STEM Education</i>					1	299,708						

UNIVERSITY OF MARYLAND BALTIMORE COUNTY

Office of Sponsored Programs: 4th Quarter YTD, FY2011

	FY2010						FY2011					
	Primary			Collaborative			Primary			Collaborative		
	App	Awd	Award	App	Awd	Award	App	Awd	Amount	App	Awd	Amount
Economics Dept							2			1	1	14,240
<i>CUERE</i>				1		599,959				1		599,953
<i>CWIT</i>										1		
<i>Mathematics and Statistics</i>										1	1	14,240
<i>MIPAR</i>				1	1	200,000				1	1	15,761
<i>Meyerhoff</i>										1	1	14,240
Sociology Dept	3	3	333,781				1			1		
<i>MIPAR</i>				11	3	1,603,933				10	12	3,854,509
History	6	7	385,079				3	4	500,668			
Language Literacy and Culture	2								92,681			
Arts, Humanities, Soc Sci Sub-Total:	87	72	7,370,454	27	9	2,097,151	107	88	14,966,520	26	19	4,182,743
Social Work Programs												
School of Social Work	2	3	189,156				1	2	153,086			
<i>Shriver Center</i>										1		
Social Work Programs							1					
Social Work Programs Sub-Total:	2	3	189,156				2	2	153,086			

UNIVERSITY OF MARYLAND BALTIMORE COUNTY

Office of Sponsored Programs: 4th Quarter YTD, FY2011

	FY2010						FY2011					
	Primary			Collaborative			Primary			Collaborative		
	App	Awd	Award	App	Awd	Award	App	Awd	Amount	App	Awd	Amount
College of Natural & Math. Sci												
Mathematics and Statistics	24	9	559,686	1			18	13	1,346,212			
<i>CASPR</i>				<i>1</i>	<i>4</i>	<i>557,484</i>				<i>2</i>		<i>465,001</i>
Physics	17	20	3,394,910				13	11	1,086,638			
<i>CASPR</i>					<i>5</i>	<i>823,533</i>				<i>1</i>		<i>425,001</i>
<i>JCET</i>				<i>2</i>	<i>6</i>	<i>1,018,117</i>				<i>5</i>		<i>518,610</i>
<i>Shriver Center</i>										<i>1</i>	<i>1</i>	<i>29,558</i>
Marine Biotechnology	27	16	1,778,458				13	12	1,307,270			
Biology	51	41	5,887,345				38	38	6,155,707			
Chemistry BioChemistry	29	17	4,063,037	1	1	159,972	15	15	3,681,713			
<i>Education</i>				<i>1</i>	<i>1</i>	<i>159,972</i>						
Institute of Fluorescence	11	7	1,120,316				7	16	977,337			
College of Natural & Math. Sci							2					
Center for Space Science Tech	27	33	4,975,946				21	25	2,709,584			
College of Natural & Math. Sci Sub-Total:	186	143	21,779,697	2	1	159,972	127	130	17,264,462			

UNIVERSITY OF MARYLAND BALTIMORE COUNTY

Office of Sponsored Programs: 4th Quarter YTD, FY2011

	FY2010						FY2011					
	Primary			Collaborative			Primary			Collaborative		
	App	Awd	Award	App	Awd	Award	App	Awd	Amount	App	Awd	Amount
Centers and Institutes												
The Hilltop Institute	38	29	7,768,671	1	2	80,329	27	34	9,457,678	2		53,090
<i>MIPAR</i>				3	4	275,177				2	4	249,152
Jnt Ctr Earth Sys Technology	55	35	3,734,871	2	8	1,114,286	26	36	5,881,214		6	546,754
<i>Physics</i>				2	6	1,018,117					5	518,610
<i>Goddard Earth Scis & Tech Cntr</i>					2	96,169					1	29,267
Goddard Earth Scis & Tech Cntr	105	61	19,089,097				56	41	9,099,098			
<i>Geography</i>				1						1	1	29,004
Goddard Planetary & Heliophy							2	2	339,667			
Shriver Center	9	11	3,318,558				11	11	2,513,156	2	1	29,558
<i>Physics</i>										1	1	29,558
<i>Political Science</i>										1		
<i>School of Social Work</i>										1		
CUERE	13	11	1,294,141	13	12	1,514,355	12	8	2,498,767	7	15	3,545,477
<i>Civil Engineering</i>				6	7	750,298				5	7	815,040
<i>Mechanical Engineering</i>										1	1	491,668
<i>Geography</i>				7	5	764,057				1	8	2,730,437
<i>Economics Dept</i>					1	599,959					1	599,953
<i>Information Systems</i>										2		
Ctr Adv Std Photonic Research	8	12	2,358,449	1	11	1,419,517	10	13	494,940		4	759,251
<i>Mathematics and Statistics</i>				1	4	557,484					2	465,001
<i>Physics</i>					5	823,533					1	425,001
<i>Gradute School</i>					3	121,500					2	81,000
<i>Computer Sci Elec Engineering</i>					7	1,015,984					4	759,251
Ctr for Advanced Sensor Tech	11	2	481,709	1			13	4	640,597			
Centers and Institutes Sub-Total:	239	161	38,045,496	18	33	4,128,487	157	149	30,925,117	9	28	4,934,130

UNIVERSITY OF MARYLAND BALTIMORE COUNTY

Office of Sponsored Programs: 4th Quarter YTD, FY2011

Central Activities	FY2010						FY2011					
	Primary			Collaborative			Primary			Collaborative		
	App	Awd	Award	App	Awd	Award	App	Awd	Amount	App	Awd	Amount
Professional Education & Train							1					
New Media							1					
Center for Women and Info Tech	2			1		40,351	5	1	16,700	2		
<i>Computer Sci Elec Engineering</i>											1	
<i>Economics Dept</i>											1	
<i>Information Systems</i>				1		40,351					1	
Library	1						1	1	3,685			
Meyerhoff	3		2,520,850				1	1	1,000,000			
Math/Science Center	1		297,029									
Upward Bound Program								2	600,766			
Office of the President				1	5	2,532,550	1	1	500,000		1	475,250
<i>Graduate School</i>					1	987,000						
<i>Office of the Provost</i>											1	200,000
<i>Student Support Services</i>				1	6	2,532,550					1	475,250
Technology Center	1	1	14,000	1	2	624,625	1	1	23,000			
<i>VP of Research</i>				1	2	624,625						
<i>Entrepreneurship</i>				1	2	624,625						
Office of Provost	1						1	2	773,077		1	200,000
<i>STEM Education</i>					1	299,708						
<i>Office of the President</i>											1	200,000
University Health Services	3	1	1,400				1					
Ofc of Sponsored Programs		2	55,241									
Ofc of Undergrad. Education	2	1	74,476				1	1	63,490			
Vice Provost Activities	1	1	83,280	1	1	109,540	3			1	2	328,920
<i>Computer Sci Elec Engineering</i>				1	1	147,600				1	2	328,920
ELC Special Programs	9	7	795,258				8	11	1,085,723	1	1	150,000

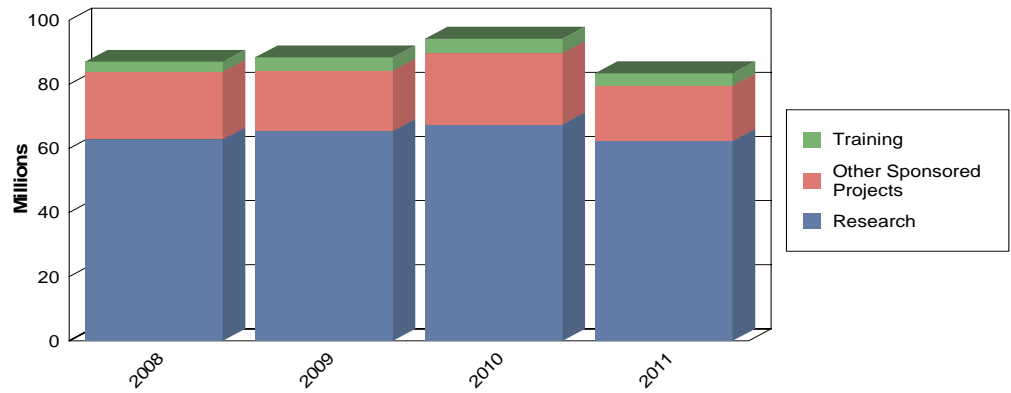
UNIVERSITY OF MARYLAND BALTIMORE COUNTY

Office of Sponsored Programs: 4th Quarter YTD, FY2011

	FY2010						FY2011					
	Primary			Collaborative			Primary			Collaborative		
	App	Awd	Award	App	Awd	Award	App	Awd	Amount	App	Awd	Amount
Graduate School				4		871,500				2		81,000
<i>Office of the President</i>				1		987,000				1	1	150,000
<i>Mechanical Engineering</i>				3		121,500				2		81,000
<i>Ctr Adv Std Photonic Research</i>				3		121,500				2		81,000
<i>Office of Provost</i>				1		750,000						
<i>Information Systems</i>				3		121,500				2		81,000
Gallery		2	6,862									
Student Affairs - Bus Serv Cnt				2		29,709						
<i>Computer Sci Elec Engineering</i>				2		29,709						
STEM EDUCATION				1		299,708						
<i>Mechanical Engineering</i>				1		299,708						
<i>Office of Provost</i>				1		299,708						
<i>Education</i>				1		299,708						
Student Support Services		2	645,335	1	1	987,000	1			1		
<i>Graduate School</i>										1		
<i>Office of the President</i>				1	6	2,532,550				1	1	475,250
<i>Graduate School Admin</i>				1	1	987,000						
Central Activities Sub-Total:	24	21	4,493,731	4	17	5,494,983	27	21	4,066,441	5	7	1,235,170
Department Grants Total:	638	470	81,163,328				544	449	73,088,333			
<i>Collaborative Grants Total:</i>				56	62	13,009,534				45	54	10,352,043
Grand Summary:	694	532	94,172,862				589	503	83,440,376			

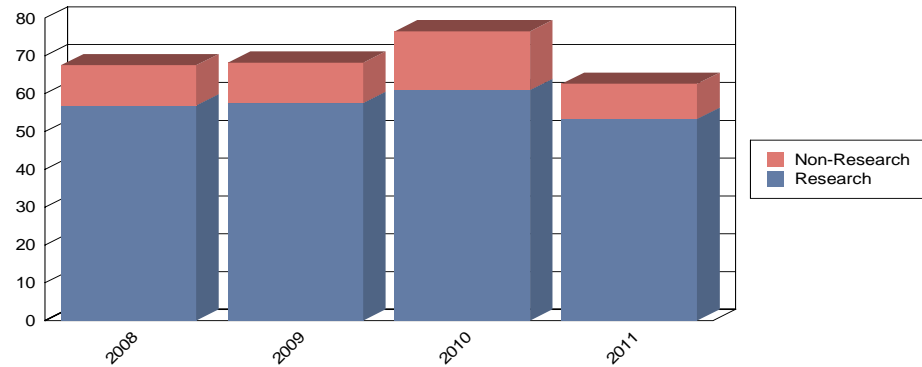
UMBC Total Awards by Activity

Date Range: 7/1/2010 to 06/30/11 4th Quarter FY11



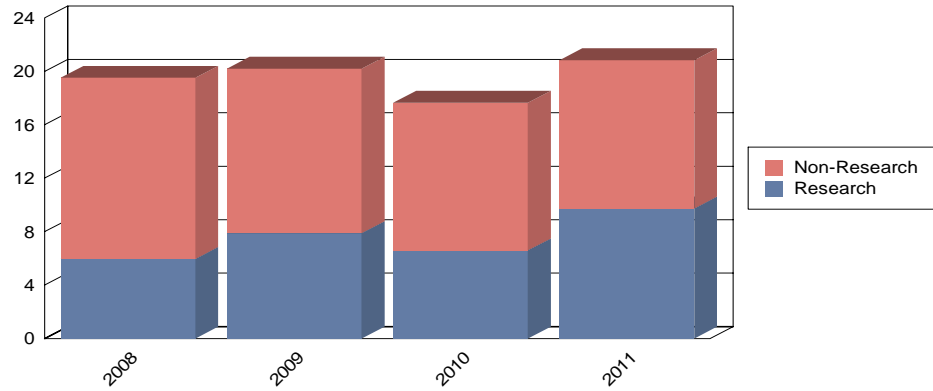
<u>FY</u>	<u>Research</u>	<u>%</u>	<u>Other Sponsored Projects</u>	<u>%</u>	<u>Training</u>	<u>%</u>	<u>Total</u>
2008	62.8	72.2%	21.1	24.3%	3.1	3.6%	87.0
2009	65.4	74.0%	18.9	21.4%	4.1	4.6%	88.4
2010	67.5	71.7%	22.1	23.5%	4.5	4.8%	94.1
2011	63.1	75.7%	16.5	19.8%	3.8	4.6%	83.4

UMBC Federal Awards Research Vs. Non-Research
Date Range: 7/1/2010 to 06/30/11 4th Quarter FY11



<u>FY Year</u>	<u>Research</u>	<u>%</u>	<u>Non - Research</u>	<u>%</u>	<u>Total</u>
2008	56.9	84.3%	10.6	15.7%	67.5
2009	57.5	84.3%	10.7	15.7%	68.2
2010	60.9	79.6%	15.6	20.4%	76.5
2011	53.3	85.1%	9.3	14.9%	62.6

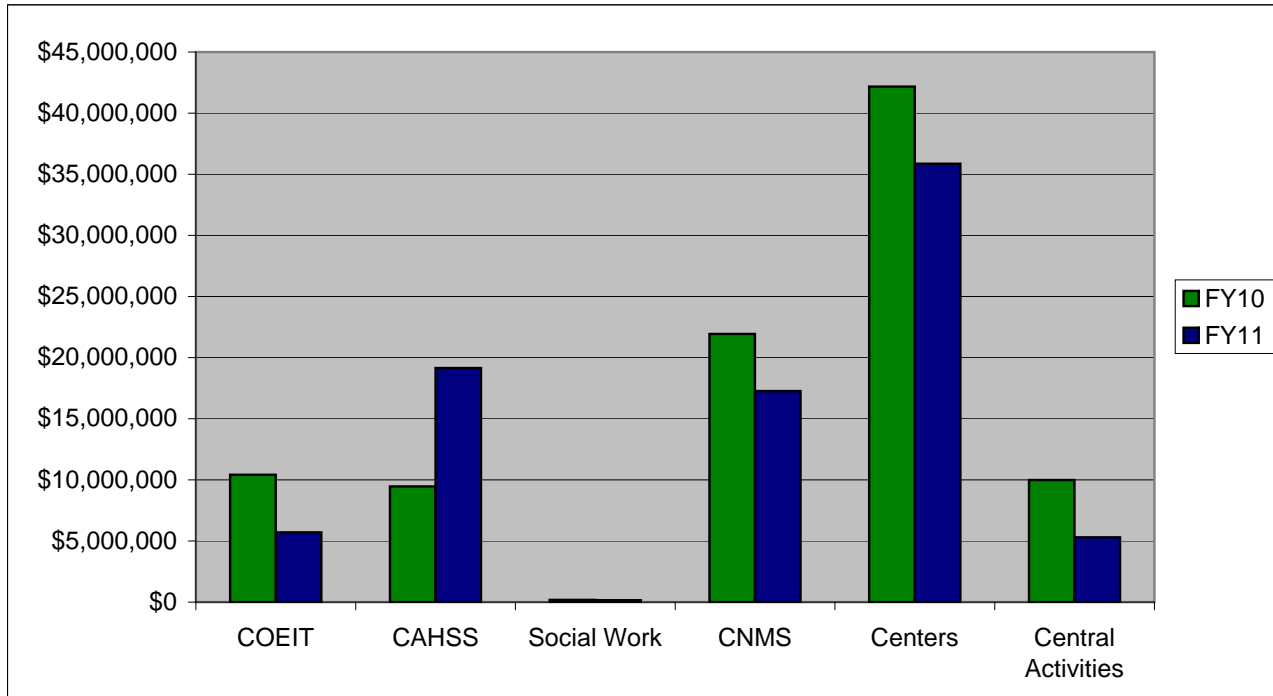
UMBC Non-Federal Awards Research Vs. Non-Research
 Date Range: 7/1/2010 to 06/30/11 4th Quarter FY11



<u>FY</u>	<u>Research</u>	<u>%</u>	<u>Non - Research</u>	<u>%</u>	<u>Total</u>
2008	5.9	30.3%	13.6	69.7%	19.5
2009	7.9	39.1%	12.3	60.9%	20.2
2010	6.6	37.5%	11.0	62.5%	17.6
2011	9.7	46.6%	11.1	53.4%	20.8

UMBC Total Awards by Unit

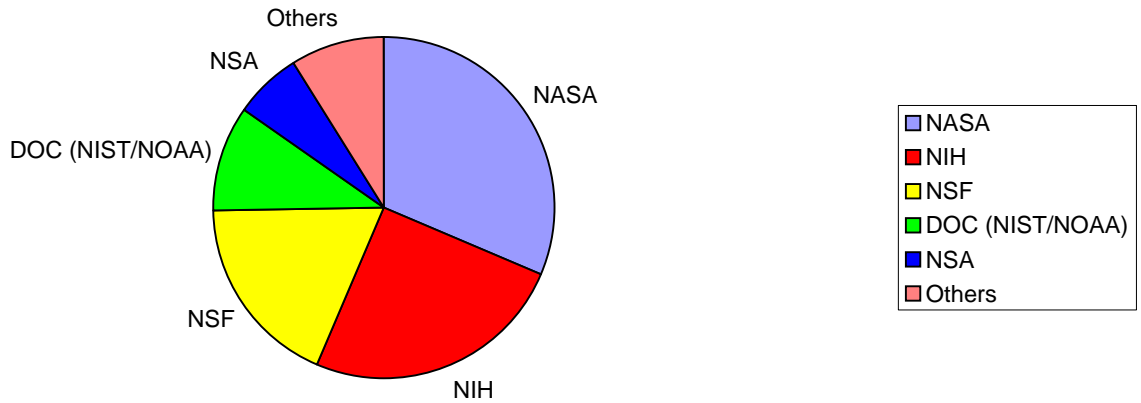
4th Q YTD FY10 compared to 4th Q YTD FY11



- COEIT College of Engineering and Information Technology
- CAHSS College of Arts, Humanities, and Social Science
- School of Social Work
- CNMS College of Natural and Mathematical Sciences
- Centers and Institutes
- Central Activities

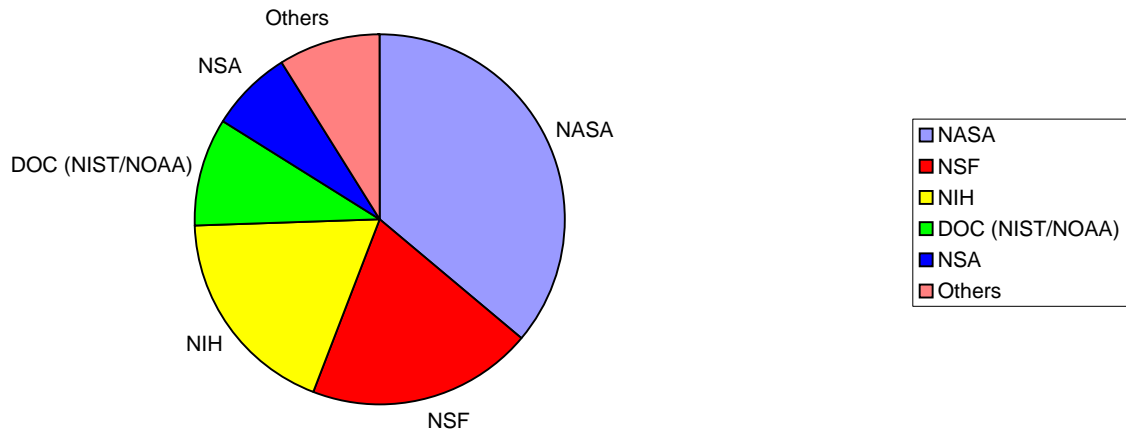
UMBC Top 5 Federal Funding Sponsors
 FY11, 4th Quarter YTD compared to FY10

FY11, 4th Quarter YTD



7/1/2010 through 6/30/2011		
NASA	\$14,944,467	31.5%
NIH	\$11,911,815	25.1%
NSF	\$8,693,891	18.3%
DOC (NIST/NOAA)	\$4,668,523	9.8%
NSA	\$3,111,511	6.5%
Others	\$4,181,939	8.8%
Total	\$47,512,146	100.0%

FY10, 4th Quarter YTD



7/1/2009 through 6/30/2010		
NASA	\$22,986,674	36.2%
NSF	\$12,526,664	19.7%
NIH	\$11,723,599	18.5%
DOC (NIST/NOAA)	\$6,017,000	9.5%
NSA	\$4,667,076	7.3%
Others	\$5,621,263	8.8%
Total	\$63,542,276	100.0%

UNIVERSITY OF MARYLAND, BALTIMORE COUNTY

Office of Sponsored Programs: 4th Quarter YTD, FY 2011

Direct & F&A Average

	FY10			FY11		
	Direct	F&A	Total	Direct	F&A	Total
College of Eng & Info Tech						
Civil Engineering	174,309	42,720	217,029	0	0	0
<i>F&A Average:</i>		24.51%			0	
Chem,Biochem & Enviro Eng-CBEE	1,639,996	500,085	2,140,081	433,985	76,134	510,119
<i>F&A Average:</i>		30.49%			17.54%	
Mechanical Engineering	1,233,828	127,249	1,361,077	813,160	254,080	1,067,240
<i>F&A Average:</i>		10.31%			31.25%	
Computer Sci Elec Engineering	4,490,772	1,304,646	5,795,418	3,191,578	813,280	4,004,858
<i>F&A Average:</i>		29.05%			25.48%	
IS Department	708,594	191,536	900,130	98,153	32,338	130,491
<i>F&A Average:</i>		27.03%			32.95%	
College of Eng & Info Tech Sub-Total:	8,247,499	2,166,236	10,413,735	4,536,876	1,175,832	5,712,708
<i>Average F&A Average:</i>		26.27%			25.92%	

UNIVERSITY OF MARYLAND, BALTIMORE COUNTY

Office of Sponsored Programs: 4th Quarter YTD, FY 2011

Direct & F&A Average

	FY10			FY11		
	Direct	F&A	Total	Direct	F&A	Total
Arts, Humanities, Soc Sci						
Dance	0	0	0	2,850	0	2,850
<i>F&A Average:</i>		<i>0</i>			<i>0</i>	
Political Science	0	0	0	1,500	0	1,500
<i>F&A Average:</i>		<i>0</i>			<i>0</i>	
Psychology Admin	1,704,683	384,954	2,089,637	1,673,100	345,195	2,018,295
<i>F&A Average:</i>		<i>22.58%</i>			<i>20.63%</i>	
MIPAR	4,561,321	777,092	5,338,412	13,211,888	2,502,318	15,714,207
<i>F&A Average:</i>		<i>17.04%</i>			<i>18.94%</i>	
Center for Art & Visual Cultur	346,849	82,539	429,388	32,085	0	32,085
<i>F&A Average:</i>		<i>23.80%</i>			<i>0</i>	
Imaging Research Center	94,864	7,236	102,100	17,068	0	17,068
<i>F&A Average:</i>		<i>7.63%</i>			<i>0</i>	
Modern Languages & Linguistics	75,190	0	75,190	56,873	0	56,873
<i>F&A Average:</i>		<i>0</i>			<i>0</i>	
Geography	0	0	0	37,057	8,427	45,484
<i>F&A Average:</i>		<i>0</i>			<i>22.74%</i>	
Education - Academic	676,779	37,239	714,018	622,711	30,601	653,312
<i>F&A Average:</i>		<i>5.50%</i>			<i>4.91%</i>	
Economics Dept	0	0	0	14,240	0	14,240
<i>F&A Average:</i>		<i>0</i>			<i>0</i>	
Sociology Dept	333,781	0	333,781	0	0	0
<i>F&A Average:</i>		<i>0</i>			<i>0</i>	
History Academic	319,182	65,897	385,079	397,355	103,313	500,668
<i>F&A Average:</i>		<i>20.65%</i>			<i>26.00%</i>	
Language Literacy and Culture	0	0	0	64,568	28,113	92,681
<i>F&A Average:</i>		<i>0</i>			<i>43.54%</i>	
Arts, Humanities, Soc Sci Sub-Total:	8,112,649	1,354,957	9,467,605	16,131,295	3,017,967	19,149,263
<i>Average F&A Average:</i>		<i>16.70%</i>			<i>18.71%</i>	

UNIVERSITY OF MARYLAND, BALTIMORE COUNTY

Office of Sponsored Programs: 4th Quarter YTD, FY 2011

Direct & F&A Average

	FY10			FY11		
	Direct	F&A	Total	Direct	F&A	Total
Social Work Programs						
School of Social Work	186,070	3,086	189,156	150,080	3,006	153,086
<i>F&A Average:</i>		<i>1.66%</i>			<i>2.00%</i>	
Social Work Programs Sub-Total:	186,070	3,086	189,156	150,080	3,006	153,086
<i>Average F&A Average:</i>		<i>1.66%</i>			<i>2.00%</i>	
College of Natural & Math. Sci						
Mathematics and Statistics	466,532	93,154	559,686	989,939	356,273	1,346,212
<i>F&A Average:</i>		<i>19.97%</i>			<i>35.99%</i>	
Physics	2,929,489	465,421	3,394,910	869,206	217,432	1,086,638
<i>F&A Average:</i>		<i>15.89%</i>			<i>25.02%</i>	
Marine Biotechnology	1,312,935	465,523	1,778,458	927,096	380,175	1,307,270
<i>F&A Average:</i>		<i>35.46%</i>			<i>41.01%</i>	
Biology - Academic	4,821,958	1,065,386	5,887,345	5,161,810	993,897	6,155,707
<i>F&A Average:</i>		<i>22.09%</i>			<i>19.25%</i>	
Chemistry BioChem - Academic	3,499,534	723,475	4,223,009	3,144,791	536,922	3,681,713
<i>F&A Average:</i>		<i>20.67%</i>			<i>17.07%</i>	
Institute of Fluorescence	827,773	292,543	1,120,316	661,784	315,553	977,337
<i>F&A Average:</i>		<i>35.34%</i>			<i>47.68%</i>	
Center for Space Science Tech	3,951,688	1,024,258	4,975,946	2,163,039	546,545	2,709,584
<i>F&A Average:</i>		<i>25.92%</i>			<i>25.27%</i>	
College of Natural & Math. Sci Sub-Total:	17,809,909	4,129,760	21,939,669	13,917,666	3,346,796	17,264,462
<i>Average F&A Average:</i>		<i>23.19%</i>			<i>24.05%</i>	

UNIVERSITY OF MARYLAND, BALTIMORE COUNTY

Office of Sponsored Programs: 4th Quarter YTD, FY 2011

Direct & F&A Average

	FY10			FY11		
	Direct	F&A	Total	Direct	F&A	Total
Centers and Institutes						
The Hilltop Institute	6,278,218	1,570,782	7,849,000	7,574,732	1,936,036	9,510,768
<i>F&A Average:</i>		25.02%			25.56%	
Jnt Ctr Earth Sys Technology	3,688,425	1,160,732	4,849,157	4,923,411	1,504,557	6,427,968
<i>F&A Average:</i>		31.47%			30.56%	
Goddard Earth Scis & Tech Cntr	15,781,716	3,307,381	19,089,097	7,490,134	1,608,963	9,099,098
<i>F&A Average:</i>		20.96%			21.48%	
Goddard Planetary & Heliophy	0	0	0	269,577	70,090	339,667
<i>F&A Average:</i>		0			26.00%	
Shriver Center	3,042,213	276,345	3,318,558	2,372,745	169,969	2,542,714
<i>F&A Average:</i>		9.08%			7.16%	
Ctr Urban Environ'l Res & Educ	2,344,712	463,784	2,808,496	4,580,890	1,463,354	6,044,244
<i>F&A Average:</i>		19.78%			31.94%	
Ctr Adv Std Photonic Research	3,223,166	554,800	3,777,966	963,743	290,448	1,254,191
<i>F&A Average:</i>		17.21%			30.14%	
Ctr for Advanced Sensor Tech	358,960	122,749	481,709	466,116	174,481	640,597
<i>F&A Average:</i>		34.20%			37.43%	
Centers and Institutes Sub-Total:	34,717,410	7,456,573	42,173,983	28,641,349	7,217,898	35,859,247
<i>Average F&A Average:</i>		21.48%			25.20%	

UNIVERSITY OF MARYLAND, BALTIMORE COUNTY

Office of Sponsored Programs: 4th Quarter YTD, FY 2011

Direct & F&A Average

	FY10			FY11		
	Direct	F&A	Total	Direct	F&A	Total
Central Activities						
Graduate School	0	0	0	126,312	23,688	150,000
<i>F&A Average:</i>		0			18.75%	
Center for Women and Info Tech	28,714	11,637	40,351	13,254	3,446	16,700
<i>F&A Average:</i>		40.53%			26.00%	
Library	0	0	0	3,685	0	3,685
<i>F&A Average:</i>		0			0	
Meyerhoff	2,408,094	112,756	2,520,850	943,622	56,378	1,000,000
<i>F&A Average:</i>		4.68%			5.97%	
Math/Science Center	279,230	17,799	297,029	0	0	0
<i>F&A Average:</i>		6.37%			0	
Upward Bound Program	0	0	0	564,042	36,724	600,766
<i>F&A Average:</i>		0			6.51%	
Office of the President	2,400,167	132,383	2,532,550	930,076	45,174	975,250
<i>F&A Average:</i>		5.52%			4.86%	
Technology Center	591,306	47,319	638,625	20,909	2,091	23,000
<i>F&A Average:</i>		8.00%			10.00%	
Office of Provost	0	0	0	864,020	109,057	973,077
<i>F&A Average:</i>		0			12.62%	
University Health Services	1,400	0	1,400	0	0	0
<i>F&A Average:</i>		0			0	
Ofc of Sponsored Programs	46,775	8,466	55,241	0	0	0
<i>F&A Average:</i>		18.10%			0	
Ofc of Undergrad. Education	74,476	0	74,476	63,490	0	63,490
<i>F&A Average:</i>		0			0	

UNIVERSITY OF MARYLAND, BALTIMORE COUNTY

Office of Sponsored Programs: 4th Quarter YTD, FY 2011

Direct & F&A Average

	FY10			FY11		
	Direct	F&A	Total	Direct	F&A	Total
Vice Provost Activities	186,651	6,169	192,820	328,920	0	328,920
<i>F&A Average:</i>		<i>3.31%</i>			<i>0</i>	
ELC Special Programs	691,649	103,609	795,258	912,862	172,861	1,085,723
<i>F&A Average:</i>		<i>14.98%</i>			<i>18.94%</i>	
Graduate School Admin	791,938	79,562	871,500	81,000	0	81,000
<i>F&A Average:</i>		<i>10.05%</i>			<i>0</i>	
Gallery	6,862	0	6,862	0	0	0
<i>F&A Average:</i>		<i>0</i>			<i>0</i>	
Student Support Services Disab	236,237	15,763	252,000	0	0	0
<i>F&A Average:</i>		<i>6.67%</i>			<i>0</i>	
Student Affairs - Bus Serv Cnt	24,689	5,020	29,709	0	0	0
<i>F&A Average:</i>		<i>20.33%</i>			<i>0</i>	
STEM EDUCATION	299,708	0	299,708	0	0	0
<i>F&A Average:</i>		<i>0</i>			<i>0</i>	
Student Support Services Acadm	1,355,799	24,536	1,380,335	0	0	0
<i>F&A Average:</i>		<i>1.81%</i>			<i>0</i>	
Central Activities Sub-Total:	9,423,695	565,019	9,988,714	4,852,192	449,419	5,301,611
<i>Average F&A Average:</i>		<i>6.00%</i>			<i>9.26%</i>	
Grand Summary:	78,497,232	15,675,630	94,172,862	68,229,458	15,210,918	83,440,376
<i>F&A Average:</i>		<i>19.97%</i>			<i>22.29%</i>	